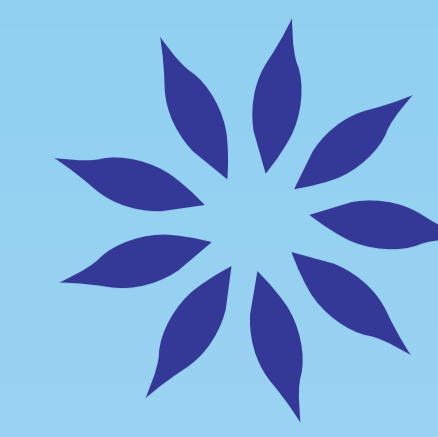


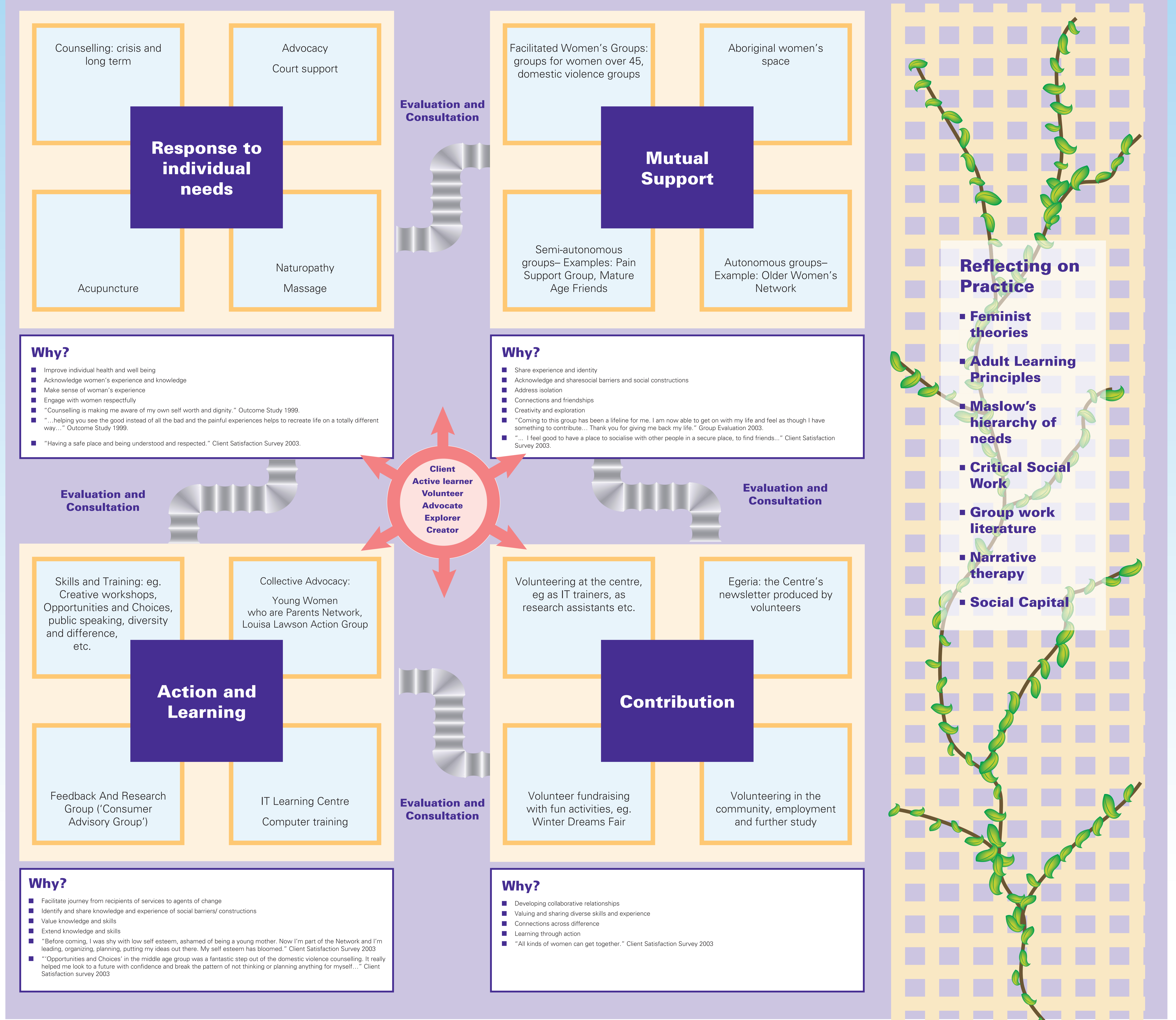
Pathways model



the benevolent society
centre for women's health

Robyn Brookes
Jessica Lopez

Sky is the limit
Women living in communities free of violence
and abuse and rich in opportunities for fun, learning and growth



A safe, accessible, welcoming and comfortable environment

Learning from similarities and difference

Creating new stories and futures

Moving on from 'client' and 'expert' identities

Listening, responding and learning from women

Self directed growth and change

A range of options and opportunities for growth and change

History of The Benevolent Society's Centre for Women's Health

The Benevolent Society's Centre for Women's Health was founded in 1994 to improve the health and well being of women in the Macarthur area of south west Sydney, an area which has rapidly developed over the last 30 years. The population is largely working class with many new migrants and public estate tenants. Following extensive consultations the centre was established to work with mid-to-older-women and women experiencing domestic violence. The Centre's growth has been informed by an action research model that has been actively supported by a research and evaluation unit. Over the years, this growth has seen the addition of a community engagement program, an Aboriginal women's space and a financial literacy program.